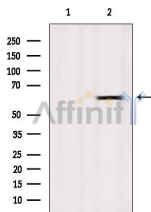


## LAT3 Ab

[Images\(1\)](#)

Cat.#: DF3041                                  Concn.: ~1mg/ml                                  Mol.Wt.: 61 KD  
Size:    Source: Rabbit    Clonality: Polyclonal

Application:                                  WB 1:500-1:1000, IF/ICC 1:100-1:500  
\*The optimal dilutions should be determined by the end user.  
Reactivity:    Human,Mouse  
Storage:    Rabbit IgG in phosphate buffered saline , pH 7.4, 150mM NaCl, 0.02% sodium azide and 50% glycerol. Store at -20 °C. Stable for 12 months from date of receipt.  
Purification:                                      The antiserum was purified by peptide affinity chromatography using SulfoLink™ Coupling Resin (Thermo Fisher Scientific).  
Immunogen:                                        A synthesized peptide derived from human LAT3, corresponding to a region within the internal amino acids.  
Uniprot:    O75387



Western blot analysis of extracts from Mouse spleen, using LAT3 Ab. Lane 1 was treated with the blocking peptide.

**IMPORTANT:** For western blot, incubate membrane with diluted primary Ab in 5% w/v milk , 1X TBS, 0.1% Tween@20 at 4°C with gentle shaking, overnight.

For Research Use Only. Not for use in diagnostic and therapeutic procedures. Not for resale without express authorization.