

## OVOL1 Ab

[Images\(1\)](#)

Cat.#: AF0311  
Size:

Concn.: ~1mg/ml  
Source: Rabbit

Mol.Wt.: 33kDa  
Clonality: Polyclonal

Application:

WB 1:500-1:3000, IF/ICC 1:100-1:500

\*The optimal dilutions should be determined by the end user.

Reactivity:

Human,Mouse

Storage:

Rabbit IgG in phosphate buffered saline , pH 7.4, 150mM NaCl, 0.02% sodium azide and 50% glycerol. Store at -20 °C. Stable for 12 months from date of receipt.

Purification:

The antiserum was purified by peptide affinity chromatography using SulfoLink™ Coupling Resin (Thermo Fisher Scientific).

Immunogen:

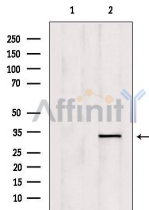
A synthesized peptide derived from human OVOL1, corresponding to a region within N-terminal amino acids.

Uniprot:

O14753

Description:

OVOL1 Putative transcription factor. Involved in hair formation and spermatogenesis. May function in the differentiation and/or maintenance of the urogenital system.



Western blot analysis of extracts from mouse brain, using OVOL1 Ab. Lane 1 was treated with the blocking peptide.

**IMPORTANT:** For western blot, incubate membrane with diluted primary Ab in 5% w/v milk , 1X TBS, 0.1% Tween@20 at 4°C with gentle shaking, overnight.

For Research Use Only. Not for use in diagnostic and therapeutic procedures. Not for resale without express authorization.