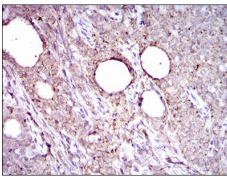


## ALDH2 Ab

[Images\(1\)](#)

Cat.#: BF1000	Concn.: ~1mg/ml	Mol.Wt.: 56.3kDa
Size:	Source: Mouse	Clonality: Monoclonal
Application:	WB 1:500-1:2000, IF/ICC 1:100-1:500, IHC 1:50-1:200 *The optimal dilutions should be determined by the end user.	
Reactivity:	Human,Mouse,Rat	
Storage:	4?; -20? for long term storage Ascitic fluid containing 0.03% sodium azide. Store at -20 °C. Stable for 12 months from date of receipt.	
Purification:	affinity purification.	
Immunogen:	Purified recombinant fragment of human ALDH2 (AA: 317-517) expressed in E. Coli.	
Uniprot:	P05091	
Description:	This protein belongs to the aldehyde dehydrogenase family of proteins. Aldehyde dehydrogenase is the second enzyme of the major oxidative pathway of alcohol metabolism. Two major liver isoforms of aldehyde dehydrogenase, cytosolic and mitochondrial, can be distinguished by their electrophoretic mobilities, kinetic properties, and subcellular localizations	



Immunohistochemical analysis of paraffin-embedded cervical cancer tissues using ALDH2 mouse mAb with DAB staining.

**IMPORTANT:** For western blot, incubate membrane with diluted primary Ab in 5% w/v milk , 1X TBS, 0.1% Tween@20 at 4°C with gentle shaking, overnight.

For Research Use Only. Not for use in diagnostic and therapeutic procedures. Not for resale without express authorization.