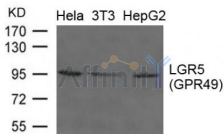


LGR5 Ab

[References\(1\)](#) [Images\(1\)](#)

Cat.#: AF4102	Concn.: ~1mg/ml	Mol.Wt.: 95kd
Size:	Source: Rabbit	Clonality: Polyclonal
Application:	WB 1:500-1:1000 *The optimal dilutions should be determined by the end user.	
Reactivity:	Human,Mouse	
Storage:	Supplied at 1.0mg/mL in phosphate buffered saline (without Mg ²⁺ and Ca ²⁺), pH 7.4, 150mM NaCl, 0.02% sodium azide and 50% glycerol. Store at -20 °C. Stable for 12 months from date of receipt.	
Purification:	The antiserum was purified by peptide affinity chromatography using SulfoLink™ Coupling Resin (Thermo Fisher Scientific).	
Immunogen:	A synthesized peptide derived from human LGR5(GPR49), corresponding to a region within C-terminal amino acids.	
Uniprot:	O75473	
Description:	Orphan receptor. Stem cell marker of the intestinal epithelium and the hair follicle. Target gene of Wnt signaling.	



Western blot analysis of extracts from HeLa, 3T3 and HepG2 cells using LGR5(GPR49) Ab

IMPORTANT: For western blot, incubate membrane with diluted primary Ab in 5% w/v milk, 1X TBS, 0.1% Tween@20 at 4°C with gentle shaking, overnight.

For Research Use Only. Not for use in diagnostic and therapeutic procedures. Not for resale without express authorization.