

Synaptophysin Ab

[Images\(1\)](#)

Cat.#: AF4095 Concn.: ~1mg/ml Mol.Wt.: 38kd
Size: Source: Rabbit Clonality: Polyclonal

Application: WB 1:500-1:2000, IF/ICC 1:100-1:500
*The optimal dilutions should be determined by the end user.

Reactivity: Human,Mouse,Rat

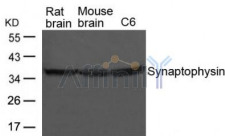
Storage: Supplied at 1.0mg/mL in phosphate buffered saline (without Mg²⁺ and Ca²⁺), pH 7.4, 150mM NaCl, 0.02% sodium azide and 50% glycerol. Store at -20 °C. Stable for 12 months from date of receipt.

Purification: The antiserum was purified by peptide affinity chromatography using SulfoLink™ Coupling Resin (Thermo Fisher Scientific).

Immunogen: A synthesized peptide derived from human Synaptophysin, corresponding to a region within the internal amino acids.

Uniprot: P08247

Description: Western blot analysis of extracts from Rat and Mouse brain tissue and C6 cells using Synaptophysin Antibody



Western blot analysis of extracts from Rat and Mouse brain tissue and C6 cells using Synaptophysin Ab

IMPORTANT: For western blot, incubate membrane with diluted primary Ab in 5% w/v milk , 1X TBS, 0.1% Tween@20 at 4°C with gentle shaking, overnight.

For Research Use Only. Not for use in diagnostic and therapeutic procedures. Not for resale without express authorization.