

CDX2 Ab

[References\(1\)](#) [Images\(3\)](#)

Cat.#: AF4089 Concn.: ~1mg/ml Mol.Wt.: 40kd
Size: Source: Rabbit Clonality: Polyclonal

Application: WB 1:500-1:1000
*The optimal dilutions should be determined by the end user.

Reactivity: Human,Mouse,Rat

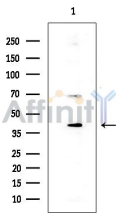
Storage: Supplied at 1.0mg/mL in phosphate buffered saline (without Mg²⁺ and Ca²⁺), pH 7.4, 150mM NaCl, 0.02% sodium azide and 50% glycerol. Store at -20 °C. Stable for 12 months from date of receipt.

Purification: The antiserum was purified by peptide affinity chromatography using SulfoLink™ Coupling Resin (Thermo Fisher Scientific).

Immunogen: A synthesized peptide derived from human CDX2, corresponding to a region within C-terminal amino acids.

Uniprot: Q99626

Description: Involved in the transcriptional regulation of multiple genes expressed in the intestinal epithelium. Important in broad range of functions from early differentiation to maintenance of the intestinal epithelial lining of both the small and large intestine.



Western blot analysis of extracts from Rat brain, using CDX2 Ab at 1/1000 dilution.
Observed bands:40kD.

IMPORTANT: For western blot, incubate membrane with diluted primary Ab in 5% w/v milk , 1X TBS, 0.1% Tween@20 at 4°C with gentle shaking, overnight.

For Research Use Only. Not for use in diagnostic and therapeutic procedures. Not for resale without express authorization.