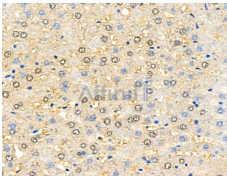


TTK Ab

[Images\(3\)](#)

| | | |
|---------------|---|-----------------------|
| Cat.#: AF0102 | Concn.: ~1mg/ml | Mol.Wt.: 100kDa |
| Size: | Source: Rabbit | Clonality: Polyclonal |
| Application: | WB 1:500-1:3000, IHC 1:50-1:200 *The optimal dilutions should be determined by the end user. | |
| Reactivity: | Human,Mouse,Rat | |
| Storage: | Rabbit IgG in phosphate buffered saline , pH 7.4, 150mM NaCl, 0.02% sodium azide and 50% glycerol. Store at -20 °C. Stable for 12 months from date of receipt. | |
| Purification: | The antiserum was purified by peptide affinity chromatography using SulfoLink™ Coupling Resin (Thermo Fisher Scientific). | |
| Immunogen: | A synthesized peptide derived from human TTK, corresponding to a region within the internal amino acids. | |
| Uniprot: | P33981 | |
| Description: | TTK a dual-specificity protein kinase orthologous to the yeast monopolar spindle (Mps1) kinase that is required for spindle pole duplication and the spindle checkpoint but not for centrosome duplication. Localized to centrosomes, kinetochores and nuclear pores. Its enzymatic activity is required for the recruitment of Mad1, Mad2, Bub1 and Bub3 to the kinetochore. | |



AF0102 at 1/100 staining Rat liver tissue by IHC-P. The sample was formaldehyde fixed and a heat mediated antigen retrieval step in citrate buffer was performed. The sample was then blocked and incubated with the primary Ab at 4°C overnight. An HRP conjugated anti-Rabbit Ab was used as the secondary Ab.

IMPORTANT: For western blot, incubate membrane with diluted primary Ab in 5% w/v milk , 1X TBS, 0.1% Tween@20 at 4°C with gentle shaking, overnight.

For Research Use Only. Not for use in diagnostic and therapeutic procedures. Not for resale without express authorization.