

## SOX2 Ab

[Images\(1\)](#)

Cat.#: AF4010                      Concn.: ~1mg/ml                      Mol.Wt.: 35kd  
Size:                                      Source: Rabbit                              Clonality: Polyclonal

Application:                      WB 1:500-1:2000  
\*The optimal dilutions should be determined by the end user.

Reactivity:                      Human,Mouse

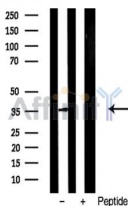
Storage:                              Supplied at 1.0mg/mL in phosphate buffered saline (without Mg<sup>2+</sup> and Ca<sup>2+</sup>), pH 7.4, 150mM NaCl, 0.02% sodium azide and 50% glycerol. Store at -20 °C. Stable for 12 months from date of receipt.

Purification:                      The antiserum was purified by peptide affinity chromatography using SulfoLink™ Coupling Resin (Thermo Fisher Scientific).

Immunogen:                      A synthesized peptide derived from human SOX2, corresponding to a region within the internal amino acids.

Uniprot:                              P48431

Description:                      Transcription factor that forms a trimeric complex with OCT4 on DNA and controls the expression of a number of genes involved in embryonic development such as YES1, FGF4, UTF1 and ZFP206. Critical for early embryogenesis and for embryonic stem cell pluripotency



Western blot analysis of extracts from human Umbilical cord mesenchymal stem cell using SOX2 Ab

**IMPORTANT:** For western blot, incubate membrane with diluted primary Ab in 5% w/v milk , 1X TBS, 0.1% Tween@20 at 4°C with gentle shaking, overnight.

For Research Use Only. Not for use in diagnostic and therapeutic procedures. Not for resale without express authorization.