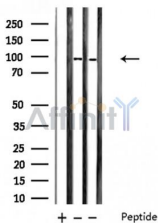


Neurologin 1/2/3/4 Ab

[Images\(1\)](#)

Cat.#: BCD16	Concn.: ~1mg/ml	Mol.Wt.: 50-100 KD
Size:	Source: Rabbit	Clonality: Polyclonal
Application:	WB 1:500-1:2000 *The optimal dilutions should be determined by the end user.	
Reactivity:	Human,Mouse,Rat	
Storage:	Rabbit IgG in phosphate buffered saline , pH 7.4, 150mM NaCl, 0.02% sodium azide and 50% glycerol.Stable for 15 months from date of receipt. Store at -20 °C. Stable for 12 months from date of receipt.	
Purification:	The antiserum was purified by peptide affinity chromatography using SulfoLink™ Coupling Resin (Thermo Fisher Scientific).	
Immunogen:	A synthesized peptide derived from human Neurologin 1/2/3/4, corresponding to a region within C-terminal amino acids.	
Uniprot:	Q8NFZ3/Q8NFZ3	



Western blot analysis of extracts from various samples, using Neurologin 1/2/3/4 Ab.

- Lane 1: Mouse brain lysates treated with blocking peptide;
- Lane 2: Mouse brain lysates;
- Lane 3: Rat brain lysates;

IMPORTANT: For western blot, incubate membrane with diluted primary Ab in 5% w/v milk , 1X TBS, 0.1% Tween@20 at 4°C with gentle shaking, overnight.

For Research Use Only. Not for use in diagnostic and therapeutic procedures. Not for resale without express authorization.