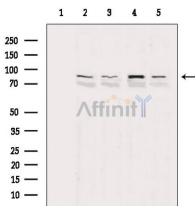


## Cleaved-PARP (Asp214) Ab

[References\(18\)](#) [Images\(17\)](#)

Cat.#: AF7023	Concn.: ~1mg/ml	Mol.Wt.: 85kDa(cleaved), 115kDa(precursor)
Size:	Source: Rabbit	Clonality: Polyclonal
Application:	WB 1:500-1:2000 *The optimal dilutions should be determined by the end user.	
Reactivity:	Human,Mouse,Rat	
Storage:	Rabbit IgG in phosphate buffered saline , pH 7.4, 150mM NaCl, 0.02% sodium azide and 50% glycerol.Stable for 14 months from date of receipt. Store at -20 °C. Stable for 12 months from date of receipt.	
Purification:	The antiserum was purified by peptide affinity chromatography using SulfoLink™ Coupling Resin (Thermo Fisher Scientific).	
Immunogen:	The antiserum was produced against synthesized peptide derived from human PARP.	
Uniprot:	P09874	
Description:	Involved in the base excision repair (BER) pathway, by catalyzing the poly(ADP-ribosylation) of a limited number of acceptor proteins involved in chromatin architecture and in DNA metabolism. This modification follows DNA damages and appears as an obligatory step in a detection/signaling pathway leading to the reparation of DNA strand breaks.	



Western blot analysis of extracts from various samples, using Cleaved-PARP (Asp214) Ab.

- Lane 1: Rat heart, blocked with antigen-specific peptides,
- Lane 2: Rat heart,
- Lane 3: Mouse brain,
- Lane 4: A549 cells(serum starvation treatment),
- Lane 5: Raji cells(serum starvation treatment).

**IMPORTANT:** For western blot, incubate membrane with diluted primary Ab in 5% w/v milk , 1X TBS, 0.1% Tween@20 at 4°C with gentle shaking, overnight.

For Research Use Only. Not for use in diagnostic and therapeutic procedures. Not for resale without express authorization.