

Nrf2 Ab

[References\(14\)](#) [Images\(18\)](#)

Cat.#: AF7006 Concn.: ~1mg/ml Mol.Wt.: 68kDa,125kDa
 Size: Source: Rabbit Clonality: Polyclonal

Application: WB 1:500-1:2000, IHC 1:50-1:200, IF/ICC 1:100-1:500
 *The optimal dilutions should be determined by the end user.

Reactivity: Human,Mouse,Rat

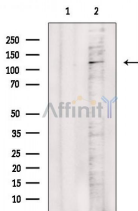
Storage: Rabbit IgG in phosphate buffered saline , pH 7.4, 150mM NaCl, 0.02% sodium azide and 50% glycerol. Store at -20 °C. Stable for 12 months from date of receipt.

Purification: The antiserum was purified by peptide affinity chromatography using SulfoLink™ Coupling Resin (Thermo Fisher Scientific).

Immunogen: A synthesized peptide derived from human Nrf2, corresponding to a region within C-terminal amino acids.

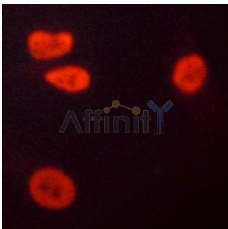
Uniprot: Q16236

Description: NRF2 a transcription factor that regulates basal expression and antioxidant induction of a transcription factor for NAD(P)H:quinone oxidoreductase-1 (NQO1) and other detoxifying genes. Targeted for proteasomal degradation by INrf2.



Western blot analysis of extracts from LoVo cells, using Nrf2 Ab. The lane on the left was treated with blocking peptide.

Observed bands: 125kDa



AF7006 staining A549 cells by ICC/IF. Cells were fixed with PFA and permeabilized in 0.1% saponin prior to blocking in 10% serum for 45 minutes at 37°C. The primary Ab was diluted 1/400 and incubated with the sample for 1 hour at 37°C. A Alexa Fluor® 594 conjugated goat polyclonal to rabbit IgG (H+L), diluted 1/600 was used as secondary Ab.

IMPORTANT: For western blot, incubate membrane with diluted primary Ab in 5% w/v milk , 1X TBS, 0.1% Tween@20 at 4°C with gentle shaking, overnight.



Affinity Biosciences

website:www.affbiotech.com

order:order@affbiotech.com

For Research Use Only. Not for use in diagnostic and therapeutic procedures. Not for resale without express authorization.