

## CaMKII alpha/beta/delta Ab

[Images\(2\)](#)

Cat.#: AF6492  
Size:

Concn.: ~1mg/ml  
Source: Rabbit

Mol.Wt.: 54kDa  
Clonality: Polyclonal

Application:

WB 1:500-1:2000, IHC 1:50-1:200, IF/ICC 1:100-1:500

\*The optimal dilutions should be determined by the end user.

Reactivity:

Human,Mouse,Rat

Storage:

Rabbit IgG in phosphate buffered saline , pH 7.4, 150mM NaCl, 0.02% sodium azide and 50% glycerol. Store at -20 °C. Stable for 12 months from date of receipt.

Purification:

The antiserum was purified by peptide affinity chromatography using SulfoLink™ Coupling Resin (Thermo Fisher Scientific).

Immunogen:

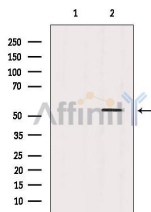
A synthesized peptide derived from human CaMK2 alpha/beta/delta, corresponding to a region within the internal amino acids.

Uniprot:

Q9UQM7/Q13554/Q13557

Description:

CaMK2-alpha a protein kinase of the CAMK2 family. A prominent kinase in the central nervous system that may function in long-term potentiation and neurotransmitter release.



Western blot analysis of extracts from Mouse lung, using CaMK2 alpha/beta/delta Ab. Lane 1 was treated with the blocking peptide.

**IMPORTANT:** For western blot, incubate membrane with diluted primary Ab in 5% w/v milk , 1X TBS, 0.1% Tween@20 at 4°C with gentle shaking, overnight.

For Research Use Only. Not for use in diagnostic and therapeutic procedures. Not for resale without express authorization.