

FANCD2 Ab

[Images\(1\)](#)

Cat.#: AF6480 Concn.: ~1mg/ml Mol.Wt.: 166kDa
Size: Source: Rabbit Clonality: Polyclonal

Application: WB 1:500-1:2000, IHC 1:50-1:200, IF/ICC 1:100-1:500
*The optimal dilutions should be determined by the end user.

Reactivity: Human,Mouse,Rat

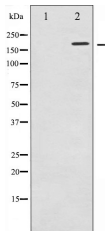
Storage: Rabbit IgG in phosphate buffered saline , pH 7.4, 150mM NaCl, 0.02% sodium azide and 50% glycerol. Store at -20 °C. Stable for 12 months from date of receipt.

Purification: The antiserum was purified by peptide affinity chromatography using SulfoLink™ Coupling Resin (Thermo Fisher Scientific).

Immunogen: A synthesized peptide derived from human FANCD2, corresponding to a region within N-terminal amino acids.

Uniprot: Q9BXW9

Description: FANCD2 Required for maintenance of chromosomal stability. Promotes accurate and efficient pairing of homologs during meiosis.



Western blot analysis of FANCD2 expression in CalyculinA treated HT29 whole cell lysates, The lane on the left was treated with the antigen-specific peptide.

IMPORTANT: For western blot, incubate membrane with diluted primary Ab in 5% w/v milk , 1X TBS, 0.1% Tween@20 at 4°C with gentle shaking, overnight.

For Research Use Only. Not for use in diagnostic and therapeutic procedures. Not for resale without express authorization.