

CDC37 Ab

[Images\(1\)](#)

Cat.#: AF6458 Concn.: ~1mg/ml Mol.Wt.: 44kDa
Size: Source: Rabbit Clonality: Polyclonal

Application: WB 1:500-1:2000, IHC 1:50-1:200, IF/ICC 1:100-1:500
*The optimal dilutions should be determined by the end user.

Reactivity: Human,Mouse,Rat

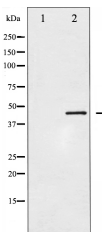
Storage: Rabbit IgG in phosphate buffered saline , pH 7.4, 150mM NaCl, 0.02% sodium azide and 50% glycerol. Store at -20 °C. Stable for 12 months from date of receipt.

Purification: The antiserum was purified by peptide affinity chromatography using SulfoLink™ Coupling Resin (Thermo Fisher Scientific).

Immunogen: A synthesized peptide derived from human CDC37, corresponding to a region within N-terminal amino acids.

Uniprot: Q16543

Description: The protein encoded by this gene is highly similar to Cdc 37, a cell division cycle control protein of *Sacchromyces cerevisiae*. This protein is a molecular chaperone with specific function in cell signal transduction.



Western blot analysis of CDC37 expression in NIH-3T3 whole cell lysates, The lane on the left was treated with the antigen-specific peptide.

IMPORTANT: For western blot, incubate membrane with diluted primary Ab in 5% w/v milk , 1X TBS, 0.1% Tween@20 at 4°C with gentle shaking, overnight.

For Research Use Only. Not for use in diagnostic and therapeutic procedures. Not for resale without express authorization.