

## SMC1 Ab

[Images\(1\)](#)

Cat.#: AF6439                      Concn.: ~1mg/ml                      Mol.Wt.: 145kDa  
Size:                                      Source: Rabbit                              Clonality: Polyclonal

Application:                      WB 1:500-1:2000, IHC 1:50-1:200, IF/ICC 1:100-1:500  
\*The optimal dilutions should be determined by the end user.

Reactivity:                      Human,Mouse

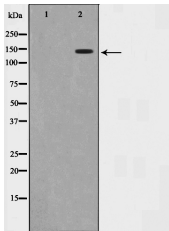
Storage:                              Rabbit IgG in phosphate buffered saline , pH 7.4, 150mM NaCl, 0.02% sodium azide and 50% glycerol. Store at -20 °C. Stable for 12 months from date of receipt.

Purification:                      The antiserum was purified by peptide affinity chromatography using SulfoLink™ Coupling Resin (Thermo Fisher Scientific).

Immunogen:                      A synthesized peptide derived from human SMC1, corresponding to a region within the internal amino acids.

Uniprot:                              Q14683

Description:                      SMC1 is a component of the cohesin multiprotein complex that is required for sister chromatid cohesion. Most of the cohesin complexes dissociate from the chromosomes before mitosis, although those complexes at the kinetochores remain. Thought to be an important part of functional kinetochores.



Western blot analysis of SMC1 expression in UV treated 293 whole cell lysates, The lane on the left was treated with the antigen-specific peptide.

**IMPORTANT:** For western blot, incubate membrane with diluted primary Ab in 5% w/v milk , 1X TBS, 0.1% Tween@20 at 4°C with gentle shaking, overnight.

For Research Use Only. Not for use in diagnostic and therapeutic procedures. Not for resale without express authorization.