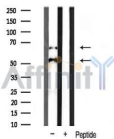


CaMKII beta/ gamma/ delta Ab

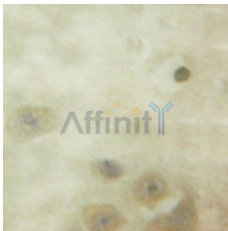
[Images\(2\)](#)

| | | |
|---------------|-----------------|-----------------------|
| Cat.#: AF6434 | Concn.: ~1mg/ml | Mol.Wt.: 50kDa,65kDa |
| Size: | Source: Rabbit | Clonality: Polyclonal |

| | |
|---------------|---|
| Application: | WB 1:500-1:2000, IHC 1:50-1:200 *The optimal dilutions should be determined by the end user. |
| Reactivity: | Human,Mouse,Rat |
| Storage: | Rabbit IgG in phosphate buffered saline , pH 7.4, 150mM NaCl, 0.02% sodium azide and 50% glycerol. Store at -20 °C. Stable for 12 months from date of receipt. |
| Purification: | The antiserum was purified by peptide affinity chromatography using SulfoLink™ Coupling Resin (Thermo Fisher Scientific). |
| Immunogen: | A synthesized peptide derived from human CaMK2 beta/ gamma/ delta, corresponding to a region within the internal amino acids. |
| Uniprot: | Q13554/Q13555/Q13557 |
| Description: | The product of this gene belongs to the serine/threonine protein kinase family and to the Ca(2+)/calmodulin-dependent protein kinase subfamily. Calcium signaling is crucial for several aspects of plasticity at glutamatergic synapses. |



Western blot analysis of CaMK2-beta/gamma/delta expression in Rat spleen tissue lysates, The lane on the right was treated with the antigen-specific peptide.



AF6434 at 1/100 staining human brain tissue by IHC-P. The sample was formaldehyde fixed and a heat mediated antigen retrieval step in citrate buffer was performed. The sample was then blocked and incubated with the Ab for 1.5 hours at 22°C. An HRP conjugated goat anti-rabbit Ab was used as the secondary Ab.

IMPORTANT: For western blot, incubate membrane with diluted primary Ab in 5% w/v milk , 1X TBS, 0.1% Tween@20 at 4°C with gentle shaking, overnight.



Affinity Biosciences

website: www.affbiotech.com

order: order@affbiotech.com

For Research Use Only. Not for use in diagnostic and therapeutic procedures. Not for resale without express authorization.