

AMPK alpha 1 Ab

[References\(2\)](#) [Images\(6\)](#)

Cat.#: AF6422 Concn.: ~1mg/ml Mol.Wt.: 62kDa, 70 kDa
Size: Source: Rabbit Clonality: Polyclonal

Application: WB 1:500-1:2000, IHC 1:50-1:200, IF/ICC 1:100-1:500
*The optimal dilutions should be determined by the end user.

Reactivity: Human,Mouse,Rat

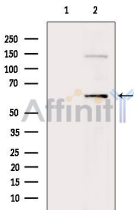
Storage: Rabbit IgG in phosphate buffered saline , pH 7.4, 150mM NaCl, 0.02% sodium azide and 50% glycerol. Store at -20 °C. Stable for 12 months from date of receipt.

Purification: The antiserum was purified by peptide affinity chromatography using SulfoLink™ Coupling Resin (Thermo Fisher Scientific).

Immunogen: A synthesized peptide derived from human AMPK alpha 1, corresponding to a region within C-terminal amino acids.

Uniprot: Q13131

Description: AMPKA1 a protein kinase of the CAMKL family that plays a central role in regulating cellular and organismal energy balance in response to the balance between AMP/ATP, and intracellular Ca(2+) levels.



Western blot analysis of extracts from Mouse brain, using AMPK alpha 1 Ab. The lane on the left was treated with blocking peptide.

IMPORTANT: For western blot, incubate membrane with diluted primary Ab in 5% w/v milk , 1X TBS, 0.1% Tween@20 at 4°C with gentle shaking, overnight.

For Research Use Only. Not for use in diagnostic and therapeutic procedures. Not for resale without express authorization.