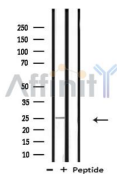


RPL10 Ab

[Images\(1\)](#)

Cat.#: AF0293	Concn.: ~1mg/ml	Mol.Wt.: 25kDa
Size:	Source: Rabbit	Clonality: Polyclonal

Application:	WB 1:500-1:3000, IF/ICC 1:100-1:500 *The optimal dilutions should be determined by the end user.
Reactivity:	Human,Mouse,Rat
Storage:	Rabbit IgG in phosphate buffered saline , pH 7.4, 150mM NaCl, 0.02% sodium azide and 50% glycerol. Store at -20 °C. Stable for 12 months from date of receipt.
Purification:	The antiserum was purified by peptide affinity chromatography using SulfoLink™ Coupling Resin (Thermo Fisher Scientific).
Immunogen:	A synthesized peptide derived from human RPL10, corresponding to a region within N-terminal amino acids.
Uniprot:	P27635
Description:	RPL10 Belongs to the ribosomal protein L10e family. Component of the large ribosomal subunit. Mature ribosomes consist of a small (40S) and a large (60S) subunit. The 40S subunit contains about 33 different proteins and 1 molecule of RNA (18S).



Western blot analysis of extracts from mouse brain, using RPL10 Ab.

IMPORTANT: For western blot, incubate membrane with diluted primary Ab in 5% w/v milk , 1X TBS, 0.1% Tween@20 at 4°C with gentle shaking, overnight.

For Research Use Only. Not for use in diagnostic and therapeutic procedures. Not for resale without express authorization.