

Rel Ab

[Images\(3\)](#)

Cat.#: AF6395
Size:

Concn.: ~1mg/ml
Source: Rabbit

Mol.Wt.: 78kDa
Clonality: Polyclonal

Application:

WB 1:500-1:2000, IHC 1:50-1:200, IF/ICC 1:100-1:500
*The optimal dilutions should be determined by the end user.

Reactivity:

Human

Storage:

Rabbit IgG in phosphate buffered saline , pH 7.4, 150mM NaCl, 0.02% sodium azide and 50% glycerol. Store at -20 °C. Stable for 12 months from date of receipt.

Purification:

The antiserum was purified by peptide affinity chromatography using SulfoLink™ Coupling Resin (Thermo Fisher Scientific).

Immunogen:

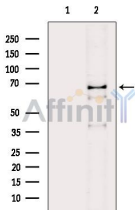
A synthesized peptide derived from human Rel, corresponding to a region within the internal amino acids.

Uniprot:

Q04864

Description:

REL a proto-oncogenic transcription factor of the nuclear factor-kappaB (NFkB) group. There are five NFkB proteins in mammals (RelA/NFkB-p65, RelB, c-Rel, NF- κ B1/NFkB-p105, and NF- κ B2/NFkB-p100).



Western blot analysis of extracts from EC304 cells(heat-shock treatment), using Rel Ab. The lane on the left was treated with blocking peptide.

IMPORTANT: For western blot, incubate membrane with diluted primary Ab in 5% w/v milk , 1X TBS, 0.1% Tween@20 at 4°C with gentle shaking, overnight.

For Research Use Only. Not for use in diagnostic and therapeutic procedures. Not for resale without express authorization.