

MEF2A Ab

[Images\(2\)](#)

Cat.#: AF6382 Concn.: ~1mg/ml Mol.Wt.: 55kDa
Size: Source: Rabbit Clonality: Polyclonal

Application: WB 1:500-1:2000, IHC 1:50-1:200, IF/ICC 1:100-1:500
*The optimal dilutions should be determined by the end user.

Reactivity: Human,Mouse,Rat

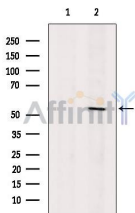
Storage: Rabbit IgG in phosphate buffered saline , pH 7.4, 150mM NaCl, 0.02% sodium azide and 50% glycerol. Store at -20 °C. Stable for 12 months from date of receipt.

Purification: The antiserum was purified by peptide affinity chromatography using SulfoLink™ Coupling Resin (Thermo Fisher Scientific).

Immunogen: A synthesized peptide derived from human MEF2A, corresponding to a region within the internal amino acids.

Uniprot: Q02078

Description: MEF2A a myocyte-specific enhancing transcription factor which binds specifically to the MEF2 element present in the regulatory regions of many, if not all, muscle-specific genes. A member of the MADS gene family that also includes several homeotic genes and other transcription factors, all of which share a conserved DNA-binding domain.



Western blot analysis of extracts from MCF7, using MEF2A Ab. The lane on the left was treated with blocking peptide.

IMPORTANT: For western blot, incubate membrane with diluted primary Ab in 5% w/v milk , 1X TBS, 0.1% Tween@20 at 4°C with gentle shaking, overnight.

For Research Use Only. Not for use in diagnostic and therapeutic procedures. Not for resale without express authorization.