

## LIMK2 Ab

[References\(1\)](#) [Images\(1\)](#)

Cat.#: AF6346  
Size:

Concn.: ~1mg/ml  
Source: Rabbit

Mol.Wt.: 72kDa  
Clonality: Polyclonal

Application:

WB 1:500-1:2000, IF/ICC 1:100-1:500

\*The optimal dilutions should be determined by the end user.

Reactivity:

Human,Mouse,Rat

Storage:

Rabbit IgG in phosphate buffered saline , pH 7.4, 150mM NaCl, 0.02% sodium azide and 50% glycerol. Store at -20 °C. Stable for 12 months from date of receipt.

Purification:

The antiserum was purified by peptide affinity chromatography using SulfoLink™ Coupling Resin (Thermo Fisher Scientific).

Immunogen:

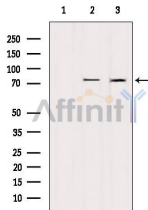
A synthesized peptide derived from human LIMK2, corresponding to a region within the internal amino acids.

Uniprot:

P53671

Description:

There are approximately 40 known eukaryotic LIM proteins, so named for the LIM domains they contain. LIM domains are highly conserved cysteine-rich structures containing 2 zinc fingers.



Western blot analysis of extracts from various samples, using LIMK2 Ab.

Lane 1: HeLa treated with blocking peptide;

Lane 2: HeLa;

Lane 3: HuvEc.

**IMPORTANT:** For western blot, incubate membrane with diluted primary Ab in 5% w/v milk , 1X TBS, 0.1% Tween@20 at 4°C with gentle shaking, overnight.

For Research Use Only. Not for use in diagnostic and therapeutic procedures. Not for resale without express authorization.