

## VASP Ab

[Images\(2\)](#)

Cat.#: AF6338                                  Concn.: ~1mg/ml                                  Mol.Wt.: 46kDa,50kDa  
Size:    Source: Rabbit    Clonality: Polyclonal

Application:                                  WB 1:500-1:2000, IF/ICC 1:100-1:500  
\*The optimal dilutions should be determined by the end user.

Reactivity:    Human,Mouse,Rat

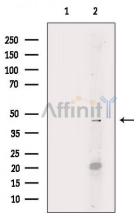
Storage:    Rabbit IgG in phosphate buffered saline , pH 7.4, 150mM NaCl, 0.02% sodium azide and 50% glycerol. Store at -20 °C. Stable for 12 months from date of receipt.

Purification:    The antiserum was purified by peptide affinity chromatography using SulfoLink™ Coupling Resin (Thermo Fisher Scientific).

Immunogen:    A synthesized peptide derived from human VASP, corresponding to a region within the internal amino acids.

Uniprot:    P50552

Description:    Vasodilator-stimulated phosphoprotein (VASP) is a member of the Ena-VASP protein family. Ena-VASP family members contain an EHV1 N-terminal domain that binds proteins containing E/DFPPPPXD/E motifs and targets Ena-VASP proteins to focal adhesions.



Western blot analysis of extracts from HepG2 cells, using VASP Ab. The lane on the left was treated with blocking peptide.

**IMPORTANT:** For western blot, incubate membrane with diluted primary Ab in 5% w/v milk , 1X TBS, 0.1% Tween@20 at 4°C with gentle shaking, overnight.

For Research Use Only. Not for use in diagnostic and therapeutic procedures. Not for resale without express authorization.