

## GATA4 Ab

[Images\(1\)](#)

Cat.#: AF6317                      Concn.: ~1mg/ml                      Mol.Wt.: 48kDa  
Size:                                      Source: Rabbit                              Clonality: Polyclonal

**Application:**                      WB 1:500-1:2000, IF/ICC 1:100-1:500  
\*The optimal dilutions should be determined by the end user.

**Reactivity:**                      Human,Mouse,Rat

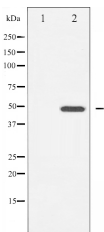
**Storage:**                              Rabbit IgG in phosphate buffered saline , pH 7.4, 150mM NaCl, 0.02% sodium azide and 50% glycerol. Store at -20 °C. Stable for 12 months from date of receipt.

**Purification:**                      The antiserum was purified by peptide affinity chromatography using SulfoLink™ Coupling Resin (Thermo Fisher Scientific).

**Immunogen:**                      A synthesized peptide derived from human GATA4, corresponding to a region within the internal amino acids.

**Uniprot:**                              P43694

**Description:**                      This gene encodes a member of the GATA family of zinc-finger transcription factors. Members of this family recognize the GATA motif which is present in the promoters of many genes.



Western blot analysis of GATA4 expression in HeLa whole cell lysates, The lane on the left was treated with the antigen-specific peptide.

**IMPORTANT:** For western blot, incubate membrane with diluted primary Ab in 5% w/v milk , 1X TBS, 0.1% Tween@20 at 4°C with gentle shaking, overnight.

For Research Use Only. Not for use in diagnostic and therapeutic procedures. Not for resale without express authorization.