

SYK Ab

[Images\(1\)](#)

Cat.#: AF6314
Size:

Concn.: ~1mg/ml
Source: Rabbit

Mol.Wt.: 72kDa
Clonality: Polyclonal

Application:

WB 1:500-1:2000, IHC 1:50-1:200, IF/ICC 1:100-1:500
*The optimal dilutions should be determined by the end user.

Reactivity:

Human,Mouse,Rat,Monkey

Storage:

Rabbit IgG in phosphate buffered saline , pH 7.4, 150mM NaCl, 0.02% sodium azide and 50% glycerol. Store at -20 °C. Stable for 12 months from date of receipt.

Purification:

The antiserum was purified by peptide affinity chromatography using SulfoLink™ Coupling Resin (Thermo Fisher Scientific).

Immunogen:

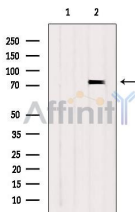
A synthesized peptide derived from human SYK, corresponding to a region within the internal amino acids.

Uniprot:

P43405

Description:

Syk is a cytoplasmic tyrosine kinase of the SYK family containing two SH2 domains. Plays a central role in the B cell receptor (BCR) response. An upstream activator of the PI3K, PLCgamma2, and Rac/cdc42 pathways in the BCR response.



Western blot analysis of extracts from HeLa, using SYK Ab. The lane on the left was treated with blocking peptide.

IMPORTANT: For western blot, incubate membrane with diluted primary Ab in 5% w/v milk , 1X TBS, 0.1% Tween@20 at 4°C with gentle shaking, overnight.

For Research Use Only. Not for use in diagnostic and therapeutic procedures. Not for resale without express authorization.