

## G3BP-1 Ab

[Images\(2\)](#)

Cat.#: AF6427  
Size:

Concn.: ~1mg/ml  
Source: Rabbit

Mol.Wt.: 60kDa  
Clonality: Polyclonal

Application:

WB 1:500-1:2000, IHC 1:50-1:200

\*The optimal dilutions should be determined by the end user.

Reactivity:

Human,Mouse

Storage:

Rabbit IgG in phosphate buffered saline , pH 7.4, 150mM NaCl, 0.02% sodium azide and 50% glycerol. Store at -20 °C. Stable for 12 months from date of receipt.

Purification:

The antiserum was purified by peptide affinity chromatography using SulfoLink™ Coupling Resin (Thermo Fisher Scientific).

Immunogen:

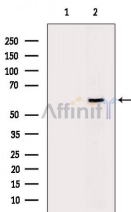
A synthesized peptide derived from human G3BP-1, corresponding to a region within the internal amino acids.

Uniprot:

Q13283

Description:

G3BP-1 an hnRNA-binding protein and endoribonuclease that participates in the Ras signal transduction pathway. A regulated effector of stress granule (SG) assembly. SGs are involved in mRNA sorting in the storing of untranslated mRNAs.



Western blot analysis of extracts from Mouse brain, using G3BP-1 Ab. The lane on the left was treated with blocking peptide.

**IMPORTANT:** For western blot, incubate membrane with diluted primary Ab in 5% w/v milk , 1X TBS, 0.1% Tween@20 at 4°C with gentle shaking, overnight.

For Research Use Only. Not for use in diagnostic and therapeutic procedures. Not for resale without express authorization.