

PTEN Ab

[References\(14\)](#) [Images\(18\)](#)

Cat.#: AF6351
Size:

Concn.: ~1mg/ml
Source: Rabbit

Mol.Wt.: 54kDa
Clonality: Polyclonal

Application:

WB 1:500-1:2000, IHC 1:50-1:200, IF/ICC 1:100-1:500
*The optimal dilutions should be determined by the end user.

Reactivity:

Human,Mouse,Rat,Monkey

Storage:

Rabbit IgG in phosphate buffered saline , pH 7.4, 150mM NaCl, 0.02% sodium azide and 50% glycerol. Store at -20 °C. Stable for 12 months from date of receipt.

Purification:

The antiserum was purified by peptide affinity chromatography using SulfoLink™ Coupling Resin (Thermo Fisher Scientific).

Immunogen:

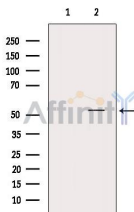
A synthesized peptide derived from human PTEN, corresponding to a region within C-terminal amino acids.

Uniprot:

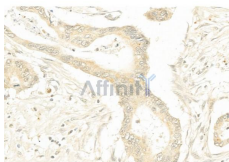
P60484

Description:

PTEN a phosphoinositide 3-phosphatase (PIP3) and a tumor suppressor implicated in a wide variety of human cancers. Dephosphorylates inositol phospholipids generated by the activation of the phosphoinositide 3 kinase (PI3K).



Western blot analysis of extracts from VERO, using PTEN Ab. The lane on the left was treated with blocking peptide.



AF6351 at 1/100 staining Human pancreatic cancer by IHC-P. The sample was formaldehyde fixed and a heat mediated antigen retrieval step in citrate buffer was performed. The sample was then blocked and incubated with the primary Ab at 4°C overnight. An HRP conjugated anti-Rabbit Ab was used as the secondary Ab.

IMPORTANT: For western blot, incubate membrane with diluted primary Ab in 5% w/v milk , 1X TBS, 0.1% Tween@20 at 4°C with gentle shaking, overnight.



Affinity Biosciences

website: www.affbiotech.com

order: order@affbiotech.com

For Research Use Only. Not for use in diagnostic and therapeutic procedures. Not for resale without express authorization.