

DDIT3/CHOP Ab

[References\(29\)](#) [Images\(19\)](#)

Cat.#: AF6277 Concn.: ~1mg/ml Mol.Wt.: 19~30kD
Size: Source: Rabbit Clonality: Polyclonal

Application: WB 1:500-1:2000, IHC 1:50-1:200, IF/ICC 1:100-1:500
*The optimal dilutions should be determined by the end user.

Reactivity: Human,Mouse

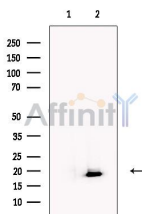
Storage: Rabbit IgG in phosphate buffered saline , pH 7.4, 150mM NaCl, 0.02% sodium azide and 50% glycerol. Store at -20 °C. Stable for 12 months from date of receipt.

Purification: The antiserum was purified by peptide affinity chromatography using SulfoLink™ Coupling Resin (Thermo Fisher Scientific).

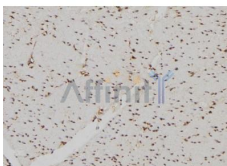
Immunogen: A synthesized peptide derived from human DDIT3, corresponding to a region within N-terminal amino acids.

Uniprot: P35638

Description: CHOP a transcriptional-regulatory protein of the bZIP family. Inhibits the DNA-binding activity of C/EBP and LAP by forming heterodimers that cannot bind DNA. May play an important role in melanoma progression. CK2-mediated phosphorylation inhibits its transcriptional activity.



Western blot analysis of extracts from Hela cells , using CHOP Ab. The lane on the left was treated with blocking peptide.



AF6277 at 1/100 staining Human gastric tissue by IHC-P. The sample was formaldehyde fixed and a heat mediated antigen retrieval step in citrate buffer was performed. The sample was then blocked and incubated with the Ab for 1.5 hours at 22°C. An HRP conjugated goat anti-rabbit Ab was used as the secondary Ab.

IMPORTANT: For western blot, incubate membrane with diluted primary Ab in 5% w/v milk , 1X TBS, 0.1% Tween@20 at 4°C with gentle shaking, overnight.



Affinity Biosciences

website: www.affbiotech.com

order: order@affbiotech.com

For Research Use Only. Not for use in diagnostic and therapeutic procedures. Not for resale without express authorization.