

SHC Ab

[Images\(1\)](#)

Cat.#: AF6246 Concn.: ~1mg/ml Mol.Wt.: 46,52,66kDa
Size: Source: Rabbit Clonality: Polyclonal

Application: WB 1:500-1:2000, IHC 1:50-1:200, IF/ICC 1:100-1:500
*The optimal dilutions should be determined by the end user.

Reactivity: Human,Mouse,Rat

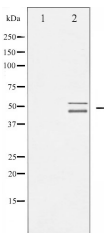
Storage: Rabbit IgG in phosphate buffered saline , pH 7.4, 150mM NaCl, 0.02% sodium azide and 50% glycerol. Store at -20 °C. Stable for 12 months from date of receipt.

Purification: The antiserum was purified by peptide affinity chromatography using SulfoLink™ Coupling Resin (Thermo Fisher Scientific).

Immunogen: A synthesized peptide derived from human SHC, corresponding to a region within the internal amino acids.

Uniprot: P29353

Description: Shc1 IS an adaptor protein containing a SH2 domain and a PID domain within a PH domain-like fold. Three isoforms(p66, p52 and p46), produced by alternative initiation, variously regulate growth factor signaling, oncogenesis and apoptosis.



Western blot analysis of Shc expression in CalyculinA treated HeLa whole cell lysates, The lane on the left was treated with the antigen-specific peptide.

IMPORTANT: For western blot, incubate membrane with diluted primary Ab in 5% w/v milk , 1X TBS, 0.1% Tween@20 at 4°C with gentle shaking, overnight.

For Research Use Only. Not for use in diagnostic and therapeutic procedures. Not for resale without express authorization.