

## SHP1 Ab

[Images\(2\)](#)

Cat.#: AF6244                      Concn.: ~1mg/ml                      Mol.Wt.: 67kDa  
Size:                                      Source: Rabbit                          Clonality: Polyclonal

**Application:** WB 1:500-1:2000, IHC 1:50-1:200, IF/ICC 1:100-1:500  
\*The optimal dilutions should be determined by the end user.

**Reactivity:** Human,Mouse,Rat

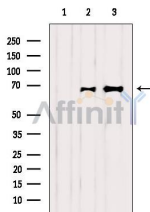
**Storage:** Rabbit IgG in phosphate buffered saline , pH 7.4, 150mM NaCl, 0.02% sodium azide and 50% glycerol. Store at -20 °C. Stable for 12 months from date of receipt.

**Purification:** The antiserum was purified by peptide affinity chromatography using SulfoLink™ Coupling Resin (Thermo Fisher Scientific).

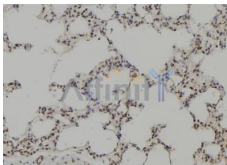
**Immunogen:** A synthesized peptide derived from human SHP1, corresponding to a region within C-terminal amino acids.

**Uniprot:** P29350

**Description:** The protein encoded by this gene is a member of the protein tyrosine phosphatase (PTP) family. PTPs are known to be signaling molecules that regulate a variety of cellular processes including cell growth, differentiation, mitotic cycle, and oncogenic transformation.



Western blot analysis of extracts from various samples, using SHP-1 Ab.  
Lane 1: HepG2 treated with blocking peptide;  
Lane 2: HepG2;  
Lane 3: 3T3.



AF6244 at 1/100 staining Rat lung tissue by IHC-P. The sample was formaldehyde fixed and a heat mediated antigen retrieval step in citrate buffer was performed. The sample was then blocked and incubated with the Ab for 1.5 hours at 22°C. An HRP conjugated goat anti-rabbit Ab was used as the secondary Ab.

**IMPORTANT:** For western blot, incubate membrane with diluted primary Ab in 5% w/v milk , 1X TBS, 0.1% Tween@20 at 4°C with gentle shaking, overnight.



**Affinity Biosciences**

website:[www.affbiotech.com](http://www.affbiotech.com)

order:[order@affbiotech.com](mailto:order@affbiotech.com)

---

For Research Use Only. Not for use in diagnostic and therapeutic procedures. Not for resale without express authorization.