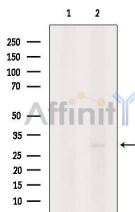


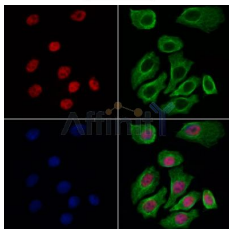
ATF1 Ab

Images(3)

Cat.#: AF6208	Concn.: ~1mg/ml	Mol.Wt.: 29kDa
Size:	Source: Rabbit	Clonality: Polyclonal
Application:	WB 1:500-1:2000, IHC 1:50-1:200, IF/ICC 1:100-1:500 *The optimal dilutions should be determined by the end user.	
Reactivity:	Human,Mouse	
Storage:	Rabbit IgG in phosphate buffered saline , pH 7.4, 150mM NaCl, 0.02% sodium azide and 50% glycerol. Store at -20 °C. Stable for 12 months from date of receipt.	
Purification:	The antiserum was purified by peptide affinity chromatography using SulfoLink™ Coupling Resin (Thermo Fisher Scientific).	
Immunogen:	A synthesized peptide derived from human ATF1, corresponding to a region within the internal amino acids.	
Uniprot:	P18846	
Description:	ATF-1 a transcription factor that is a member of the leucine zipper family. Forms a homodimer or heterodimer with c-Jun and stimulates CRE-dependent transcription. Binds the Tax-responsive element (TRE) of HTLV-I. Activated downstream of IL-1. c-Src and TRAF6 are mediators of IL-1-induced AP-1 activation.	



Western blot analysis of extracts from Myeloma cells, using ATF1 Ab. The lane on the left was treated with blocking peptide.



AF6208 staining HeLa cells by IF/ICC. The samples were fixed with PFA and permeabilized in 0.1% Triton X-100, then blocked in 10% serum for 45 minutes at 25°C. Samples were then incubated with primary Ab(AF6208 1:200) and mouse anti-beta tubulin Ab(T0023 1:200) for 1 hour at 37°C. An AlexaFluor594 conjugated goat anti-rabbit IgG(H+L) Ab(Red) and an AlexaFluor488 conjugated goat anti-mouse IgG(H+L) Ab(Green) were used as the secondary Ab.

The nuclear counter stain is DAPI(blue).

IMPORTANT: For western blot, incubate membrane with diluted primary Ab in 5% w/v milk , 1X TBS, 0.1% Tween@20 at 4°C with gentle shaking,

overnight.

For Research Use Only. Not for use in diagnostic and therapeutic procedures. Not for resale without express authorization.