

## PLCG2 Ab

[Images\(2\)](#)

Cat.#: AF6192                      Concn.: ~1mg/ml                      Mol.Wt.: 150kDa  
Size:                                      Source: Rabbit                              Clonality: Polyclonal

Application:                      WB 1:500-1:2000, IHC 1:50-1:200, IF/ICC 1:100-1:500  
\*The optimal dilutions should be determined by the end user.

Reactivity:                      Human,Mouse,Rat

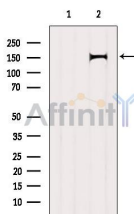
Storage:                              Rabbit IgG in phosphate buffered saline , pH 7.4, 150mM NaCl, 0.02% sodium azide and 50% glycerol. Store at -20 °C. Stable for 12 months from date of receipt.

Purification:                      The antiserum was purified by peptide affinity chromatography using SulfoLink™ Coupling Resin (Thermo Fisher Scientific).

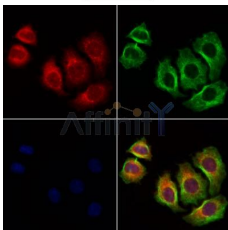
Immunogen:                      A synthesized peptide derived from human PLCG2, corresponding to a region within the internal amino acids.

Uniprot:                              P16885

Description:                      Enzymes of the phospholipase C family catalyze the hydrolysis of phospholipids to yield diacylglycerols and water-soluble phosphorylated derivatives of the lipid head groups. A number of these enzymes have specificity for phosphoinositides.



Western blot analysis of extracts from B16F10, using PLCG2 Ab. The lane on the left was treated with blocking peptide.



AF6192 staining HeLa cells by IF/ICC. The samples were fixed with PFA and permeabilized in 0.1% Triton X-100, then blocked in 10% serum for 45 minutes at 25°C. Samples were then incubated with primary Ab(AF6192 1:200) and mouse anti-beta tubulin Ab(T0023 1:200) for 1 hour at 37°C. An AlexaFluor594 conjugated goat anti-rabbit IgG(H+L) Ab(Red) and an AlexaFluor488 conjugated goat anti-mouse IgG(H+L) Ab(Green) were used as the secondary Ab. The nuclear counter stain is DAPI(blue).

**IMPORTANT:** For western blot, incubate membrane with diluted primary Ab in 5% w/v milk , 1X TBS, 0.1% Tween@20 at 4°C with gentle shaking, overnight.



**Affinity Biosciences**

website:[www.affbiotech.com](http://www.affbiotech.com)

order:[order@affbiotech.com](mailto:order@affbiotech.com)

---

For Research Use Only. Not for use in diagnostic and therapeutic procedures. Not for resale without express authorization.