

CD19 Ab

[Images\(2\)](#)

Cat.#: AF6181
Size:

Concn.: ~1mg/ml
Source: Rabbit

Mol.Wt.: 61kDa
Clonality: Polyclonal

Application:

WB 1:500-1:2000, IF/ICC 1:100-500

*The optimal dilutions should be determined by the end user.

Reactivity:

Human,Mouse,Monkey

Storage:

Rabbit IgG in phosphate buffered saline , pH 7.4, 150mM NaCl, 0.02% sodium azide and 50% glycerol. Store at -20 °C. Stable for 12 months from date of receipt.

Purification:

The antiserum was purified by peptide affinity chromatography using SulfoLink™ Coupling Resin (Thermo Fisher Scientific).

Immunogen:

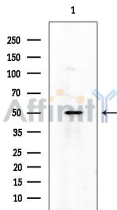
A synthesized peptide derived from human CD19, corresponding to a region within C-terminal amino acids.

Uniprot:

P15391

Description:

CD19 a cell surface molecule which assembles with the antigen receptor of B lymphocytes. A critical signal transduction molecule that regulates B lymphocyte development, activation, and differentiation.



Western blot analysis of extracts from Rat brain, using CD19 Ab at 1/1000 dilution.

Observed bands:50kD.

IMPORTANT: For western blot, incubate membrane with diluted primary Ab in 5% w/v milk , 1X TBS, 0.1% Tween@20 at 4°C with gentle shaking, overnight.

For Research Use Only. Not for use in diagnostic and therapeutic procedures. Not for resale without express authorization.