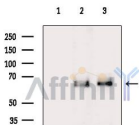


Paxillin Ab

[Images\(2\)](#)

Cat.#: AF6933	Concn.: ~1mg/ml	Mol.Wt.:
Size:	Source: Rabbit	Clonality: Polyclonal
Application:	WB 1:500-1:2000	
Reactivity:	*The optimal dilutions should be determined by the end user. Human,Mouse	
Storage:	Rabbit IgG in phosphate buffered saline , pH 7.4, 150mM NaCl, 0.02% sodium azide and 50% glycerol. Store at -20 °C. Stable for 12 months from date of receipt.	
Purification:	The antiserum was purified by peptide affinity chromatography using SulfoLink™ Coupling Resin (Thermo Fisher Scientific).	
Immunogen:	A synthesized peptide derived from human Paxillin.	
Uniprot:	P49023	



Western blot analysis of extracts from various samples, using Paxillin Ab.
Lane 1: Hela cells(heat-shock treatment), blocked with antigen-specific peptides.
Lane 2: Hela cells(heat-shock treatment).
Lane 3: Hepg2 cells(heat-shock treatment).

IMPORTANT: For western blot, incubate membrane with diluted primary Ab in 5% w/v milk , 1X TBS, 0.1% Tween@20 at 4°C with gentle shaking, overnight.

For Research Use Only. Not for use in diagnostic and therapeutic procedures. Not for resale without express authorization.