

Phospho-Tip60 (Ser90) Ab

[Images\(1\)](#)

Cat.#: AF3923 Concn.: ~1mg/ml Mol.Wt.:
Size: Source: Rabbit Clonality: Polyclonal

Application: WB 1:500-1:2000
 *The optimal dilutions should be determined by the end user.

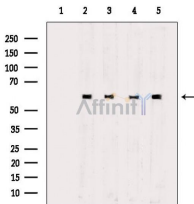
Reactivity: Human,Mouse

Storage: Rabbit IgG in phosphate buffered saline , pH 7.4, 150mM NaCl, 0.02% sodium azide and 50% glycerol. Store at -20 °C. Stable for 12 months from date of receipt.

Purification: The Ab is from purified rabbit serum by affinity purification via sequential chromatography on phospho-peptide and non-phospho-peptide affinity columns.

Immunogen: A synthesized peptide derived from human Tip60 around the phosphorylation site of Ser90.

Uniprot: Q92993



Western blot analysis of extracts from various samples, using Phospho-Tip60 (Ser90) Ab.

Lane 1: Mouse kidney, blocked with antigen-specific peptides,
Lane 2: Mouse kidney,
Lane 3: Mouse liver,
Lane 4: HepG2 cells(heat-shock treatment),
Lane 5: A549 cells.

IMPORTANT: For western blot, incubate membrane with diluted primary Ab in 5% w/v milk , 1X TBS, 0.1% Tween@20 at 4°C with gentle shaking, overnight.

For Research Use Only. Not for use in diagnostic and therapeutic procedures. Not for resale without express authorization.