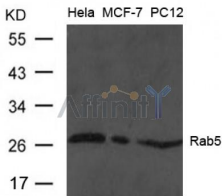


## Rab5A Ab

[Images\(1\)](#)

Cat.#: AF4073    Concn.: ~1mg/ml    Mol.Wt.: 25kd  
Size:    Source: Rabbit    Clonality: Polyclonal

Application:    WB 1:500-1:1000  
\*The optimal dilutions should be determined by the end user.  
Reactivity:    Human,Mouse,Rat  
Storage:    Supplied at 1.0mg/mL in phosphate buffered saline (without Mg<sup>2+</sup> and Ca<sup>2+</sup>), pH 7.4, 150mM NaCl, 0.02% sodium azide and 50% glycerol. Store at -20 °C. Stable for 12 months from date of receipt.  
Purification:    The antiserum was purified by peptide affinity chromatography using SulfoLink™ Coupling Resin (Thermo Fisher Scientific).  
Immunogen:    A synthesized peptide derived from human Rab5A, corresponding to a region within C-terminal amino acids.  
Uniprot:    P20339  
Description:    Required for the fusion of plasma membranes and early endosomes.



Western blot analysis of extract from HeLa, MCF and PC12 cells using Rab5 Ab

**IMPORTANT:** For western blot, incubate membrane with diluted primary Ab in 5% w/v milk , 1X TBS, 0.1% Tween@20 at 4°C with gentle shaking, overnight.

For Research Use Only. Not for use in diagnostic and therapeutic procedures. Not for resale without express authorization.