

Pin1 Ab

[Images\(1\)](#)

Cat.#: AF6430 Concn.: ~1mg/ml Mol.Wt.: 18kDa
Size: Source: Rabbit Clonality: Polyclonal

Application: WB 1:500-1:2000, IF/ICC 1:100-1:500
*The optimal dilutions should be determined by the end user.

Reactivity: Human,Mouse,Rat,Monkey

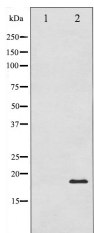
Storage: Rabbit IgG in phosphate buffered saline , pH 7.4, 150mM NaCl, 0.02% sodium azide and 50% glycerol. Store at -20 °C. Stable for 12 months from date of receipt.

Purification: The antiserum was purified by peptide affinity chromatography using SulfoLink™ Coupling Resin (Thermo Fisher Scientific).

Immunogen: A synthesized peptide derived from human Pin1, corresponding to a region within N-terminal amino acids.

Uniprot: Q13526

Description: Pin1 is a member of the parvulin family of peptidyl-prolyl isomerases (PPIase), has been implicated in the G2-M transition of the cell cycle. Has two distinct functional domains: an N-terminal WW domain and a C-terminal PPIase domain.



Western blot analysis of Pin1 expression in COS7 whole cell lysates, The lane on the left was treated with the antigen-specific peptide.

IMPORTANT: For western blot, incubate membrane with diluted primary Ab in 5% w/v milk , 1X TBS, 0.1% Tween@20 at 4°C with gentle shaking, overnight.

For Research Use Only. Not for use in diagnostic and therapeutic procedures. Not for resale without express authorization.