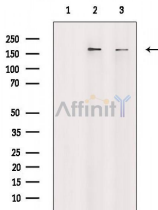


TOP2A Ab

[Images\(1\)](#)

Cat.#: AF6728 Concn.: ~1mg/ml Mol.Wt.: 170~190kD
Size: Source: Rabbit Clonality: Polyclonal

Application: WB 1:500-1:2000
 *The optimal dilutions should be determined by the end user.
Reactivity: Human
Storage: Rabbit IgG in phosphate buffered saline , pH 7.4, 150mM NaCl, 0.02% sodium azide and 50% glycerol. Store at -20 °C. Stable for 12 months from date of receipt.
Purification: The antiserum was purified by peptide affinity chromatography using SulfoLink™ Coupling Resin (Thermo Fisher Scientific).
Immunogen: A synthesized peptide derived from human TOP2A.
Uniprot: P11388



Western blot analysis of extracts from various samples, using TOP2A Ab.
Lane 1: Hela cells(LPS treatment), blocked with antigen-specific peptides,
Lane 2: Hela cells(LPS treatment),
Lane 3: Hela cells(heat shock treatment).

IMPORTANT: For western blot, incubate membrane with diluted primary Ab in 5% w/v milk , 1X TBS, 0.1% Tween@20 at 4°C with gentle shaking, overnight.

For Research Use Only. Not for use in diagnostic and therapeutic procedures. Not for resale without express authorization.