

## NCF1/p47-phox Ab

[Images\(1\)](#)

Cat.#: AF6167                      Concn.: ~1mg/ml                      Mol.Wt.: 44kDa  
Size:                                      Source: Rabbit                              Clonality: Polyclonal

Application:                      WB 1:500-1:2000, IHC 1:50-1:200, IF/ICC 1:100-1:500  
\*The optimal dilutions should be determined by the end user.

Reactivity:                      Human

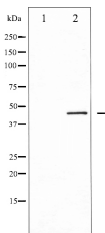
Storage:                              Rabbit IgG in phosphate buffered saline , pH 7.4, 150mM NaCl, 0.02% sodium azide and 50% glycerol. Store at -20 °C. Stable for 12 months from date of receipt.

Purification:                      The antiserum was purified by peptide affinity chromatography using SulfoLink™ Coupling Resin (Thermo Fisher Scientific).

Immunogen:                      A synthesized peptide derived from human NCF1/p47-phox, corresponding to a region within C-terminal amino acids.

Uniprot:                              P14598

Description:                      The 47-kilodalton cytosolic subunit of the multi-protein complex known as NADPH oxidase is found in neutrophils. The holo-oxidase produces a burst of superoxide which is delivered to the lumen of the neutrophil phagosome. Contains 2 SH2 domains.



Western blot analysis of p47 phox expression in TSA treated HeLa whole cell lysates, The lane on the left was treated with the antigen-specific peptide.

**IMPORTANT:** For western blot, incubate membrane with diluted primary Ab in 5% w/v milk , 1X TBS, 0.1% Tween@20 at 4°C with gentle shaking, overnight.

For Research Use Only. Not for use in diagnostic and therapeutic procedures. Not for resale without express authorization.