

Bcr Ab

[Images\(1\)](#)

| | | |
|---------------|-----------------|-----------------------|
| Cat.#: AF6154 | Concn.: ~1mg/ml | Mol.Wt.: 160kDa |
| Size: | Source: Rabbit | Clonality: Polyclonal |

Application: WB 1:500-1:2000, IF/ICC 1:100-1:500
*The optimal dilutions should be determined by the end user.

Reactivity: Human,Mouse

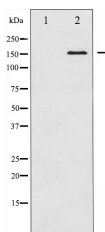
Storage: Rabbit IgG in phosphate buffered saline , pH 7.4, 150mM NaCl, 0.02% sodium azide and 50% glycerol. Store at -20 °C. Stable for 12 months from date of receipt.

Purification: The antiserum was purified by peptide affinity chromatography using SulfoLink™ Coupling Resin (Thermo Fisher Scientific).

Immunogen: A synthesized peptide derived from human Bcr, corresponding to a region within N-terminal amino acids.

Uniprot: P11274

Description: Bcr is a serine/threonine and GTPase-activating protein (GAP). breakpoint cluster region protein. GTPase-activating protein for RAC1 and CDC42. Promotes the exchange of RAC or CDC42-bound GDP by GTP, thereby activating them.



Western blot analysis of Bcr expression in K562 whole cell lysates, The lane on the left was treated with the antigen-specific peptide.

IMPORTANT: For western blot, incubate membrane with diluted primary Ab in 5% w/v milk , 1X TBS, 0.1% Tween@20 at 4°C with gentle shaking, overnight.

For Research Use Only. Not for use in diagnostic and therapeutic procedures. Not for resale without express authorization.