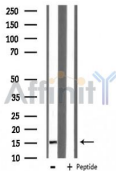


## Histone H2A Ab

[Images\(1\)](#)

Cat.#: AF6135	Concn.: ~1mg/ml	Mol.Wt.: 14 kDa
Size:	Source: Rabbit	Clonality: Polyclonal
Application:	IHC 1:50-1:200, WB 1:1000 *The optimal dilutions should be determined by the end user.	
Reactivity:	Human,Mouse,Rat	
Storage:	Rabbit IgG in phosphate buffered saline , pH 7.4, 150mM NaCl, 0.02% sodium azide and 50% glycerol. Store at -20 °C. Stable for 12 months from date of receipt.	
Purification:	The antiserum was purified by peptide affinity chromatography using SulfoLink™ Coupling Resin (Thermo Fisher Scientific).	
Immunogen:	A synthesized peptide derived from human Histone H2A, corresponding to a region within C-terminal amino acids.	
Uniprot:	P04908/P0C0S8/P20671/Q16777/Q6FI13/Q7L7L0/Q8IUE6/Q93077	
Description:	H2A.1 Core component of nucleosome. Nucleosomes wrap and compact DNA into chromatin, limiting DNA accessibility to the cellular machineries which require DNA as a template. Histones thereby play a central role in transcription regulation, DNA repair, DNA replication and chromosomal stability.	



Western blot analysis of Histone H2A expression in HeLa whole cell lysates, The lane on the left was treated with the antigen-specific peptide.

**IMPORTANT:** For western blot, incubate membrane with diluted primary Ab in 5% w/v milk , 1X TBS, 0.1% Tween@20 at 4°C with gentle shaking, overnight.

For Research Use Only. Not for use in diagnostic and therapeutic procedures. Not for resale without express authorization.