

## Phospho-MLKL (Ser360) Ab

[Images\(2\)](#)

Cat.#: AF3901  
Size:

Concn.: ~1mg/ml  
Source: Rabbit

Mol.Wt.:  
Clonality: Polyclonal

Application:

IHC 1:50-1:200

\*The optimal dilutions should be determined by the end user.

Reactivity:

Human,Mouse

Storage:

Rabbit IgG in phosphate buffered saline , pH 7.4, 150mM NaCl, 0.02% sodium azide and 50% glycerol. Store at -20 °C. Stable for 12 months from date of receipt.

Purification:

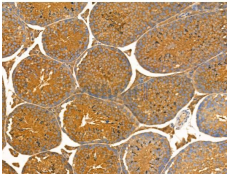
The Ab is from purified rabbit serum by affinity purification via sequential chromatography on phospho-peptide and non-phospho-peptide affinity columns.

Immunogen:

A synthesized peptide derived from human MLKL around the phosphorylation site of Ser360.

Uniprot:

Q8NB16



AF3901 at 1/100 staining Mouse testis tissue by IHC-P. The sample was formaldehyde fixed and a heat mediated antigen retrieval step in citrate buffer was performed. The sample was then blocked and incubated with the primary Ab at 4°C overnight. An HRP conjugated anti-Rabbit Ab was used as the secondary Ab.

For Research Use Only. Not for use in diagnostic and therapeutic procedures. Not for resale without express authorization.