

## Phospho-Transferrin Receptor (Tyr20) Ab

[Images\(1\)](#)

Cat.#: AF3896                      Concn.: ~1mg/ml                      Mol.Wt.:  
Size:                                      Source: Rabbit                              Clonality: Polyclonal

Application:                      IHC 1:50-1:200  
    \*The optimal dilutions should be determined by the end user.

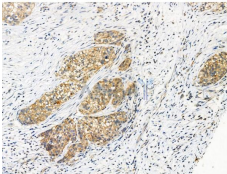
Reactivity:                        Human,Mouse

Storage:                            Rabbit IgG in phosphate buffered saline , pH 7.4, 150mM NaCl, 0.02% sodium azide and 50% glycerol. Store at -20 °C. Stable for 12 months from date of receipt.

Purification:                      The Ab is from purified rabbit serum by affinity purification via sequential chromatography on phospho-peptide and non-phospho-peptide affinity columns.

Immunogen:                        A synthesized peptide derived from human Transferrin Receptor around the phosphorylation site of Tyr20.

Uniprot:                            P02786



AF3896 at 1/100 staining Human ovarian cancer by IHC-P. The sample was formaldehyde fixed and a heat mediated antigen retrieval step in citrate buffer was performed. The sample was then blocked and incubated with the primary Ab at 4°C overnight. An HRP conjugated anti-Rabbit Ab was used as the secondary Ab.

For Research Use Only. Not for use in diagnostic and therapeutic procedures. Not for resale without express authorization.