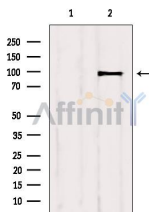


IGF1R/Insulin Receptor Ab

[References\(1\)](#) [Images\(3\)](#)

Cat.#: AF6125	Concn.: ~1mg/ml	Mol.Wt.: 95kDa,155kDa
Size:	Source: Rabbit	Clonality: Polyclonal
Application:	WB 1:500-1:2000, IHC 1:50-1:200, IF/ICC 1:100-1:500 *The optimal dilutions should be determined by the end user.	
Reactivity:	Human,Mouse,Rat	
Storage:	Rabbit IgG in phosphate buffered saline , pH 7.4, 150mM NaCl, 0.02% sodium azide and 50% glycerol. Store at -20 °C. Stable for 12 months from date of receipt.	
Purification:	The antiserum was purified by peptide affinity chromatography using SulfoLink™ Coupling Resin (Thermo Fisher Scientific).	
Immunogen:	A synthesized peptide derived from human IGF1R/Insulin Receptor, corresponding to a region within C-terminal amino acids.	
Uniprot:	P08069/P06213	
Description:	Insulin-like growth factor I, or IGF-I, is an ubiquitous peptide that acts in both an autocrine and paracrine fashion to stimulate the growth of vascular smooth muscle cells. In addition, IGF-I regulates renal function, growth and repair, is critically involved in bone formation and resorption and has been implicated in mediating aspects of the immune response.	



Western blot analysis of extracts from HuvEc, using IGF1R Ab. Lane 1 was treated with the blocking peptide.

IMPORTANT: For western blot, incubate membrane with diluted primary Ab in 5% w/v milk , 1X TBS, 0.1% Tween@20 at 4°C with gentle shaking, overnight.

For Research Use Only. Not for use in diagnostic and therapeutic procedures. Not for resale without express authorization.