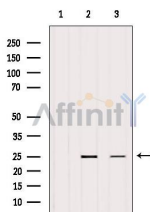


eIF4E Ab

[Images\(1\)](#)

Cat.#: AF6110	Concn.: ~1mg/ml	Mol.Wt.: 25kDa
Size:	Source: Rabbit	Clonality: Polyclonal
Application:	WB 1:500-1:2000, IHC 1:50-1:200, IF/ICC 1:100-1:500 *The optimal dilutions should be determined by the end user.	
Reactivity:	Human,Mouse,Rat	
Storage:	Rabbit IgG in phosphate buffered saline , pH 7.4, 150mM NaCl, 0.02% sodium azide and 50% glycerol. Store at -20 °C. Stable for 12 months from date of receipt.	
Purification:	The antiserum was purified by peptide affinity chromatography using SulfoLink™ Coupling Resin (Thermo Fisher Scientific).	
Immunogen:	A synthesized peptide derived from human eIF4E, corresponding to a region within C-terminal amino acids.	
Uniprot:	P06730	
Description:	eIF4E a protein of the eukaryotic initiation factor 4E family. Recognizes and binds the 7-methylguanosine-containing mRNA cap during an early step in the initiation of protein synthesis and facilitates ribosome binding by inducing the unwinding of the mRNAs secondary structures.	



Western blot analysis of extracts from various samples, using eIF4E Ab.
Lane 1: B16F10 treated with blocking peptide;
Lane 2: B16F10;
Lane 3: Hybridoma cells.

IMPORTANT: For western blot, incubate membrane with diluted primary Ab in 5% w/v milk , 1X TBS, 0.1% Tween@20 at 4°C with gentle shaking, overnight.

For Research Use Only. Not for use in diagnostic and therapeutic procedures. Not for resale without express authorization.