

Phospho-XBP1 (Ser68) Ab

[Images\(1\)](#)

Cat.#: AF3712 Concn.: ~1mg/ml Mol.Wt.:
Size: Source: Rabbit Clonality: Polyclonal

Application: IF/ICC 1:100-1:500
 *The optimal dilutions should be determined by the end user.

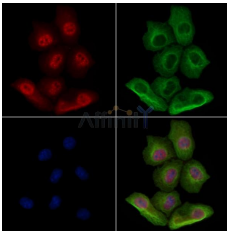
Reactivity: Human,Mouse,Rat

Storage: Rabbit IgG in phosphate buffered saline , pH 7.4, 150mM NaCl, 0.02% sodium azide and 50% glycerol. Store at -20 °C. Stable for 12 months from date of receipt.

Purification: The Ab is from purified rabbit serum by affinity purification via sequential chromatography on phospho-peptide and non-phospho-peptide affinity columns.

Immunogen: A synthesized peptide derived from human XBP1 around the phosphorylation site of Ser68.

Uniprot: P17861



AF3712 staining HeLa cells(heat shock treatment) by IF/ICC. The samples were fixed with PFA and permeabilized in 0.1% Triton X-100,then blocked in 10% serum for 45 minutes at 25°C. Samples were then incubated with primary Ab(AF3712) and mouse anti-beta tubulin Ab(T0023) for 1 hour at 37°C. An AlexaFluor594 conjugated goat anti-rabbit IgG(H+L) Ab(Red) and an AlexaFluor488 conjugated goat anti-mouse IgG(H+L) Ab(Green) were used as the secondary Ab.
The nuclear counter stain is DAPI (blue).

For Research Use Only. Not for use in diagnostic and therapeutic procedures. Not for resale without express authorization.