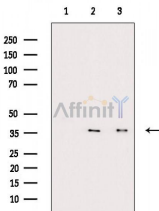


## Phospho-FAS (Tyr291) Ab

[Images\(1\)](#)

Cat.#: AF3695	Concn.: ~1mg/ml	Mol.Wt.: 37kD,50~70kD(Glycosylated)
Size:	Source: Rabbit	Clonality: Polyclonal
Application:	WB 1:500-1:2000 *The optimal dilutions should be determined by the end user.	
Reactivity:	Human,Rat	
Storage:	Rabbit IgG in phosphate buffered saline , pH 7.4, 150mM NaCl, 0.02% sodium azide and 50% glycerol. Store at -20 °C. Stable for 12 months from date of receipt.	
Purification:	The Ab is from purified rabbit serum by affinity purification via sequential chromatography on phospho-peptide and non-phospho-peptide affinity columns.	
Immunogen:	A synthesized peptide derived from human FAS around the phosphorylation site of Tyr291.	
Uniprot:	P25445	



Western blot analysis of extracts from various samples, using Phospho-FAS (Tyr291) Ab.

Lane 1: Hela cells(lps treatment), blocked with antigen-specific peptides,  
 Lane 2: Hela cells(lps treatment),  
 Lane 3: Rat muscle.

**IMPORTANT:** For western blot, incubate membrane with diluted primary Ab in 5% w/v milk , 1X TBS, 0.1% Tween@20 at 4°C with gentle shaking, overnight.

For Research Use Only. Not for use in diagnostic and therapeutic procedures. Not for resale without express authorization.