

## Phospho-SRPK2 (Ser494/Ser497) Ab

[References\(3\)](#) [Images\(7\)](#)

Cat.#: AF3633                      Concn.: ~1mg/ml                      Mol.Wt.: 78kD,110~130kD  
Size:                                      Source: Rabbit                      Clonality: Polyclonal

Application:                      IHC 1:50-1:200  
  \*The optimal dilutions should be determined by the end user.

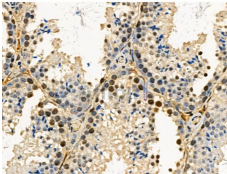
Reactivity:                      Human,Mouse,Rat

Storage:                              Rabbit IgG in phosphate buffered saline , pH 7.4, 150mM NaCl, 0.02% sodium azide and 50% glycerol. Store at -20 °C. Stable for 12 months from date of receipt.

Purification:                      The Ab is from purified rabbit serum by affinity purification via sequential chromatography on phospho-peptide and non-phospho-peptide affinity columns.

Immunogen:                      A synthesized peptide derived from human SRPK2 around the phosphorylation site of Ser494/497.

Uniprot:                              P78362



AF3633 at 1/100 staining Mouse testis tissue by IHC-P. The sample was formaldehyde fixed and a heat mediated antigen retrieval step in citrate buffer was performed. The sample was then blocked and incubated with the primary Ab at 4°C overnight. An HRP conjugated anti-Rabbit Ab was used as the secondary Ab.

For Research Use Only. Not for use in diagnostic and therapeutic procedures. Not for resale without express authorization.