

## NR3C1 Ab

[Images\(2\)](#)

Cat.#: AF6067  
Size:

Concn.: ~1mg/ml  
Source: Rabbit

Mol.Wt.: 85kDa  
Clonality: Polyclonal

Application:

WB 1:500-1:2000, IF/ICC 1:100-1:500

\*The optimal dilutions should be determined by the end user.

Reactivity:

Human,Mouse

Storage:

Rabbit IgG in phosphate buffered saline , pH 7.4, 150mM NaCl, 0.02% sodium azide and 50% glycerol. Store at -20 °C. Stable for 12 months from date of receipt.

Purification:

The antiserum was purified by peptide affinity chromatography using SulfoLink™ Coupling Resin (Thermo Fisher Scientific).

Immunogen:

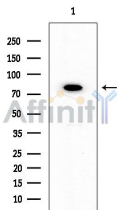
A synthesized peptide derived from human NR3C1, corresponding to a region within the internal amino acids.

Uniprot:

P04150

Description:

The protein encoded by this gene is a receptor for glucocorticoids and can act as both a transcription factor and a regulator of other transcription factors. The encoded protein can bind DNA as a homodimer or as a heterodimer with another protein such as the retinoid X receptor. This protein can also be found in heteromeric cytoplasmic complexes along with heat shock factors and immunophilins.



Western blot analysis of extracts from Rat brain, using NR3C1 Ab at 1/1000 dilution.

Observed bands:80kD.

**IMPORTANT:** For western blot, incubate membrane with diluted primary Ab in 5% w/v milk , 1X TBS, 0.1% Tween@20 at 4°C with gentle shaking, overnight.

For Research Use Only. Not for use in diagnostic and therapeutic procedures. Not for resale without express authorization.