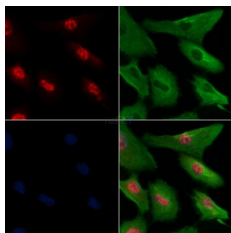


Phospho-CtIP (Thr847) Ab

[Images\(1\)](#)

| | | |
|---------------|--|-----------------------|
| Cat.#: AF3547 | Concn.: ~1mg/ml | Mol.Wt.: |
| Size: | Source: Rabbit | Clonality: Polyclonal |
| Application: | IF/ICC 1:100-1:500 *The optimal dilutions should be determined by the end user. | |
| Reactivity: | Human | |
| Storage: | Rabbit IgG in phosphate buffered saline , pH 7.4, 150mM NaCl, 0.02% sodium azide and 50% glycerol. Store at -20 °C. Stable for 12 months from date of receipt. | |
| Purification: | The Ab is from purified rabbit serum by affinity purification via sequential chromatography on phospho-peptide and non-phospho-peptide affinity columns. | |
| Immunogen: | A synthesized peptide derived from human CtIP around the phosphorylation site of Thr847. | |
| Uniprot: | Q99708 | |



AF3547 staining A549 cells(H2O2 treatment) by IF/ICC. The samples were fixed with PFA and permeabilized in 0.1% Triton X-100, then blocked in 10% serum for 45 minutes at 25°C. Samples were then incubated with primary Ab(#AF3547) and mouse anti-beta tubulin Ab(#T0023) for 1 hour at 37°C. An AlexaFluor594 conjugated goat anti-rabbit IgG Ab(Red) and an AlexaFluor488 conjugated goat anti-mouse IgG Ab(Green) were used as the secondary Ab.
The nuclear counter stain is DAPI (blue).

For Research Use Only. Not for use in diagnostic and therapeutic procedures. Not for resale without express authorization.