

Phospho-SPHK2 (Ser387) Ab

[Images\(2\)](#)

Cat.#: AF3532 Concn.: ~1mg/ml Mol.Wt.: 70kD
Size: Source: Rabbit Clonality: Polyclonal

Application: WB 1:500-1:2000, IHC 1:50-1:200
*The optimal dilutions should be determined by the end user.

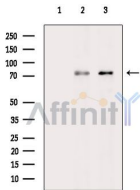
Reactivity: Human,Mouse,Rat

Storage: Rabbit IgG in phosphate buffered saline , pH 7.4, 150mM NaCl, 0.02% sodium azide and 50% glycerol. Store at -20 °C. Stable for 12 months from date of receipt.

Purification: The Ab is from purified rabbit serum by affinity purification via sequential chromatography on phospho-peptide and non-phospho-peptide affinity columns.

Immunogen: A synthesized peptide derived from human SPHK2 around the phosphorylation site of Ser387.

Uniprot: Q9NRA0

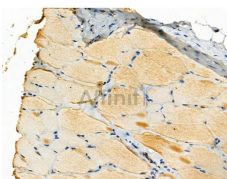


Western blot analysis of extracts from various samples, using Phospho-SPHK2 (Ser387) Ab.

Lane 1: Hepg2 cells(heat-shock treatment), blocked with antigen-specific peptides.

Lane 2: Hepg2 cells(heat-shock treatment).

Lane 3: Raw264.7 cells(uv treatment).



AF3532 at 1/100 staining Rat skin tissue by IHC-P. The sample was formaldehyde fixed and a heat mediated antigen retrieval step in citrate buffer was performed. The sample was then blocked and incubated with the primary Ab at 4°C overnight. An HRP conjugated anti-Rabbit Ab was used as the secondary Ab.

IMPORTANT: For western blot, incubate membrane with diluted primary Ab in 5% w/v milk , 1X TBS, 0.1% Tween@20 at 4°C with gentle shaking, overnight.

For Research Use Only. Not for use in diagnostic and therapeutic procedures. Not for resale without express authorization.